

PRODUCT CODE 0028

Royale Luxury Enamel

Royale Luxury Enamel is a revolutionary water based enamel that provides a smooth, luxurious finish to your doors, windows, gates, grills and interior wood. It is a safe, odour-free enamel with excellent washability and durability.

PRODUCT BENEFITS

High Gloss Finish

Royale Luxury Enamel gives you a High Gloss finish which is higher than any other water based enamel present in the market.

Odour Free

Royale Luxury Enamel does not have any smell like regular enamel paint - you won't even realise your house is painted.

Safe Enamel

Royale Luxury Enamel follows Asian Paints Green Assured standard, it is safe as per international standard.

Anti Fungal

The Biopack in Royale Luxury Enamel protects surfaces from Black spots and retains the beauty of your house!

High Washability

Royale Luxury Enamel provides you more than 100000 wash cycles which means it is the perfect enamel for high traffic wood & metal surfaces.

Non Yellowing

Remains white even after a few years, whereas regular enamel start becoming yellow and looking old!

Quick Drying

Dries within 30 minutes and can be recoated in 4 hours- so you can finish your paint job in just one day- unlike regular enamels which require 2 days.



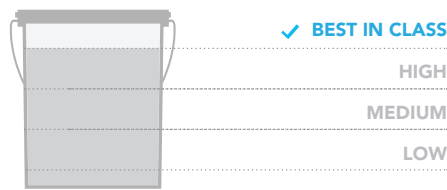
WATER BASED



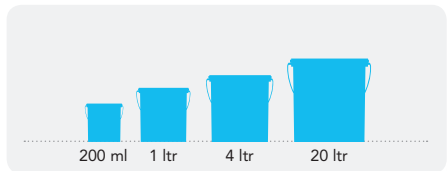
Green Assure from Asian Paints is more than just VOC (Volatile Organic Compounds).
*For more information log on to www.asianpaints.com

PRODUCT FEATURES

WASHABILITY



AVAILABLE PACKS



Shelf life: 3 years from date of manufacture in original tightly closed containers away from direct sunlight and excessive heat.

COLOURS AVAILABLE

1472*

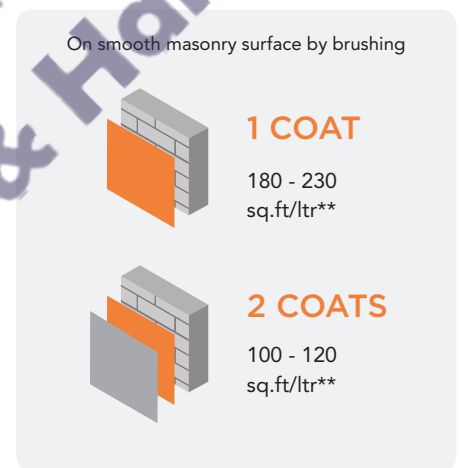
*Currently available in 1788 shades as per the Colourworld Fandeck

FINISH



Refer to sheen levels in technical details

COVERAGE



**Actual coverage may vary from the quoted coverage due to factors such as method and condition of application and surface roughness and porosity.

HOW TO APPLY

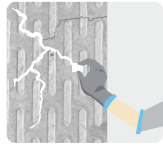
PRE PAINTING STEPS



PLASTER New masonry surfaces must be allowed to cure completely. It is recommended to allow 28 days as the curing time for new masonry surfaces.



CLEANING Surface should be free from any loose paint, dust or grease. Growths of fungus, algae or moss should be removed by wire brushing and water. In case of areas having excessive dampness use Asian Paints DampBlock to limit further dampness. When the underlying surface exhibits chalkiness, in spite of thorough surface cleaning, use Asian Paints SmartCare Exterior Sealer.



FILLING FOR CRACKS For filling masonry upto 3mm use Asian Paints SmartCare Crack Seal.



FILLING FOR HOLES & DENTS In case of dents and holes use Asian Paints Acrylic Wall Putty or white cement and fine sand in the ratio 1:3

Asian Paints Royale Luxury Enamel should not be applied on surfaces / substrates that are subjected to continuous seepage or dampness.

PAINT APPLICATION PROCESS

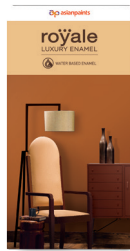
APPLICATION	CODE	THINNER	DILUTION %	APPLICATION VISCOSITY ¹	RECOATING PERIOD
SAND THE SURFACE WITH SAND PAPER 180 FOLLOWED BY SAND PAPER 320 AND WIPE CLEAN					
STEP 1 SANDING (MASONRY/ WOOD/ METAL)	0027 0027 0025	WATER	45 - 55, NO DILUTION 50 - 60	BRUSH 13 - 15 NA BRUSH 20 - 22	4 - 6 HRS
STEP 2 ROYALE LUXURY ENAMEL WOOD & METAL BASECOAT (WOOD/ METAL) ROYALE WALL BASECOAT (MASONRY)	1054 1354 0016	WATER MTO	BASED ON REQUIREMENT	BASED ON REQUIREMENT	4 - 6 HRS 6 - 8 HRS 4 - 6 HRS
SAND THE SURFACE WITH SAND PAPER 180 FOLLOWED BY SAND PAPER 320 AND WIPE CLEAN					
STEP 3 WOOD FILLER (WOOD/ ACRYLIC WALL PUTTY (WALL) KNIFE PASTE FILLER (METAL)	0027 0027 0025	WATER	45 - 55, NO DILUTION 50 - 60	BRUSH 13 - 15 NA BRUSH 20 - 22	4 - 6 HRS
SAND THE SURFACE WITH SAND PAPER 320 AND WIPE CLEAN					
STEP 4 SANDING (MASONRY/ WOOD/ METAL)	0028	WATER	BRUSH 10 - 20 SPRAY 20 - 30	BRUSH 30 - 35 SPRAY 20 - 25	4 - 6 HRS
STEP 5 ROYALE LUXURY ENAMEL WOOD & METAL BASECOAT (WOOD/ METAL) ROYALE WALL BASECOAT (MASONRY)	0028	WATER	BRUSH 10 - 20 SPRAY 20 - 30	BRUSH 30 - 35 SPRAY 20 - 25	4 - 6 HRS
STEP 6 SANDING (MASONRY/ WOOD/ METAL)					
STEP 7 FIRST COAT ROYALE LUXURY ENAMEL BRUSH / SPRAY / ROLLER					
STEP 8 SECOND COAT ROYALE LUXURY ENAMEL BRUSH / SPRAY / ROLLER					

HOW TO CHOOSE COLOURS

Browse through Asian Paints colour tools to help you find the right colour combination

COLOUR SPECTRA FAN DECK*

ROYALE LUXURY ENAMEL SHADE CARD



*These shades are for reference only. Please refer to the Colour Spectra or Colour Palette for correct shade reference

ADDITIONAL INFORMATION

VOC CONTENT



LOW VOC CONTENT

Asian Paints Royale Luxury Enamel not only conforms to international VOC specifications but also does not contain any hazardous raw material like lead, heavy metal, APEO (Alkylphenol Ethoxylates) and toxic materials as per the hazardous material usage guidelines laid out by the international GS-11 (Green Seal) standard.



Green Assure from Asian Paints is more than just VOC (Volatile Organic Compounds).
*For more information log on to www.asianpaints.com

POST PAINTING CARE

For the best performance of the paint, ensure proper washing and cleaning of fungal growth, if any, at regular intervals of six months.

TECHNICAL DETAILS

- a. **Drying time:** Surface dry time 30 min
- b. **Sheen levels:** 70 - 90 at 60 deg GH
- c. **Flash point IS101/1987 Part 1, Sec 6:** NA
- d. **Stability of thinned paint:** To be used within 24 hours

PRECAUTIONS

- > Do not apply when ambient temperature is less than 10°C or if the temperature might drop to this level within 4 hrs of application.
- > Do not over-thin or over-extend the brush.
- > Tint using Asian Paints machine colourants only.
- > Stir well and strain before use.
- > Tinted paints need thorough shaking immediately after tinter addition as well as before use.

SAFETY FEATURES

- > Kindly refer to the MSDS for Asian Paints Royale Luxury Enamel which gives detailed information on safety measures while handling the paint, which is available on request.
- > Store the container with the lid tightly closed in an upright position, in a cool, dry place.
- > Keep out of reach of children and away from eatables.
- > May be harmful if swallowed. In case of ingestion seek immediate medical attention.
- > Wear eye protection during application. In case of contact with eyes, rinse immediately with plenty of water and seek medical advice.
- > In case of skin contact immediately wash skin with soap and plenty of water. Get medical attention if irritation develops or persists.
- > Do not breathe vapour or spray. It is recommended to wear suitable nose pad during sanding and surface preparation to avoid dust inhalation
- > Do not pour leftover paint down the drain or in water courses.
- > In the event of spills, contain spillage using sand or earth.
- > No added Lead, Mercury or Chromium compounds.