

HUSAIN COLLECTION PREMIUM ACRYLIC EMULSION



**SHALIMAR
PAINTS**

A water-based interior emulsion that provides a luxurious finish to walls. Its acrylic co-polymer gives fine crack bridging property, smooth flow and excellent levelling.



Directions for use:

SURFACE PREPARATION

- Ensure the surface is dry and free from dust, rust, grease, oil and loose matter. All surfaces should be thoroughly rubbed down using a suitable abrasive paper and thereafter wiped off.

METHOD OF APPLICATION

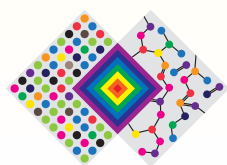
- After proper surface preparation, apply a coat of Shalimar Wall Neutralising Cement Primer/Shalimar Water Thinnable Cement Primer depending on the substrate. Allow it to dry for 6-8 hours.
- Smoothen the surface by filling dents with thin coat of Shalimar Magic Acrylic Wall Putty and allow it to dry for 6-8 hours.
- Sand the surface with emery paper 180 and wipe clean. Apply another coat of primer and allow drying for 6-8 hours.
- Sand the surface with emery paper 320 and wipe clean. Mix Husain Collection with water 40% by volume. Apply 2-3 coats of paint with an interval of 3-4 hours between the successive coats.

Application Surfaces: Husain Collection can be applied with brush, spray or roller.



Finish	Smooth with eggshell gloss
Coverage	230 – 260 sq. ft. per litre per coat (on primed & puttied smooth surface by brush application)
Supply Viscosity	(8 + / -1 poise 30°C)
Surface Dry	Within 10 minutes (at 30°C + / -1°C & 65 + / -5% R.H)
Recoat Time	3 hours minimum
Thinner	Clean tap / Potable water
Primer	Shalimar Wall Neutralising Cement Primer (for new plaster) Shalimar Water Thinnable Cement Primer (for old painted surface)
Pack Size	1 litre / 4 litre / 10 litre / 20 litre
Area of Application	Plaster, Concrete, Asbestos Sheet, False Ceiling

Actual technical details may vary from the quote above due to factors such as method & condition of application, type of surface & surface preparation.



THE ART & SCIENCE OF PAINTS

Shalimar Paints Ltd.

Corp. Office: 4th Floor, Plot No. 64, Sector-44, Gurgaon -122001, Haryana (India) | **P:** +91-124-4616600 | **F:** +91-124-4616659

E: askus@shalimarpaints.com | www.shalimarpaints.com