

SHAKTIMAN EXTERIOR ACRYLIC EMULSION



**SHALIMAR
PAINTS**

A water-based acrylic emulsion with silicon additives that offers excellent durability and protection against any climatic conditions. Its algal resistance property along with anti-fading and flaking benefits offer beautiful walls for years.



Directions for use:

SURFACE PREPARATION

- New surface must be cured for 28 days before painting and free from all waterproofing issues.
- Surface must be free of dirt, dust, grease, loose flaking paint etc.
- Surface infected with algae/fungi needs to be removed thoroughly by vigorous wire brushing and water jetting or should be treated by 3% solution of bleaching powder & potable water. Allow it to react for 6-8 hours.

PUTTY (If required)

- Apply a thin coat of Shalimar Shakti Wall Guard Putty to fill any dents/minor hair line cracks or to smoothen the surface. Allow it to dry for 6-8 hours.

PRIMING

- Apply a coat of Shalimar (Exterior Primer/ Shakti Acrylic Primer) by thinning with potable water 40-50% by volume. Allow it to dry for 4-6 hours.

TOP COAT

- Apply 2-3 coats of Super Shaktiman by thinning with potable water 40% by volume.
- Maintain a gap of 4-6 hrs between coats.
- Avoid excess dilution for better performance.

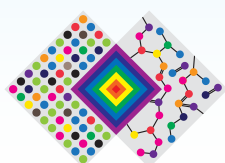
Application Surfaces: All kinds of exterior plasters, concrete and masonry surfaces.

Apply an additional coat of Super Shaktiman on horizontal surfaces or parapets for extra protection.



Finish	Smooth with Matt
Coverage	90 – 110 sq. ft. per litre per coat. (on primed & smooth surface by brush application)
Supply Viscosity	8 to 11 poise @ 30°C
Surface Dry	Within 25 minutes
Recoat Time	4 hours minimum
Thinner	Potable water
Primer	Apply a coat of Shalimar Shakti Acrylic Primer by thinning with potable water 40-50 % by volume. Allow it to dry for 4-6 hrs
Pack Size	1 litre / 4 litre / 10 litre / 20 litre
Area of application	Exterior masonry, brick work, rendering & concrete

Actual technical details may vary due to factors such as method & condition of application & type of surface.



THE ART & SCIENCE OF PAINTS

Shalimar Paints Ltd.

Corp. Office: 4th Floor, Plot No. 64, Sector-44, Gurgaon -122001, Haryana (India) | **P:** +91-124-4616600 | **F:** +91-124-4616659

E: askus@shalimarpaints.com | **www.shalimarpaints.com**