



**SHALIMAR
PAINTS**

SUPERLAC ACRYLIC EMULSION

Designed for lavish smoothness, the Superlac Acrylic Emulsion is equipped to offer excellent flow and high coverage with quick drying ability.



Directions for use:

SURFACE PREPARATION

- New surface must be cured for 28 days before painting and free from all waterproofing issues.
- Sand surface with 180 emery paper to remove dirt, dust, grease, loose flaking paint, algae, fungi etc. Wipe it clean.

PRIMER

- Apply a coat of Shalimar (Water Thinnable Cement Primer / Wall Neutralizing Cement Primer / Universal White Primer) as per recommendation. Allow it to dry for 6-8 hrs.
- Spot primer before and after filling nail holes, cracks, and other surface imperfections.

PUTTY

- Level the surface with Shalimar Magic Acrylic Wall Putty and allow it to dry for 4-6 hrs.
- Sand surface with 180/320 emery paper and wipe it clean.

PRIMER

- Apply an additional coat of the above mentioned primers. Allow it to dry for 6-8 hrs.
- Sand Surface with 320 emery paper and wipe it clean.

TOP COAT APPLICATION

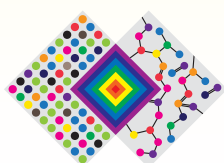
- Thin Superlac Acrylic Emulsion with potable water 30-40 % by volume.
- Apply 2-3 coats of Maestro with an interval of 4-6 hrs.
- Application can be done by brush, roller or conventional spray

For deep shades apply an additional coat of Superlac Acrylic Emulsion.



Finish	Smooth with Matt
Coverage	210 – 230 sq. ft. per litre per coat. (on suitably primed & smooth surface by brush application)
Supply Viscosity	13 + / -2 poise at 30°C
Surface Dry	Within 10 minutes (at 30°C + / -1°C & 65 + / -5% R.H)
Recoat Time	3 hours minimum
Thinner	Potable water
Primer	Shalimar Wall Neutralising Cement Primer (for new plaster), Shalimar Water thinnable Cement Primer (for old painted surface), Shalimar Universal White Primer
Pack Size	1 litre / 4 litre / 10 litre / 20 litre
Area of Application	Plasters, concrete and false ceiling.

Actual technical details may vary due to factors such as method & condition of application & type of surface.



THE ART & SCIENCE OF PAINTS

Shalimar Paints Ltd.

Corp. Office: 4th Floor, Plot No. 64, Sector-44, Gurgaon -122001, Haryana (India) | **P:** +91-124-4616600 | **F:** +91-124-4616659

E: askus@shalimarpaints.com | **www.shalimarpaints.com**