

PINK PRIMER



**SHALIMAR
PAINTS**

Shalimar Pink Primer for wood is specially formulated to protect wood. It has excellent sealing and filling capability. The primer penetrates wood fibers to provide great adhesion quality. Shalimar Wood Primer Protects wood's finishing coat and prevents oiliness from oozing out of wood surface.

Directions for use:

SURFACE PREPARATION

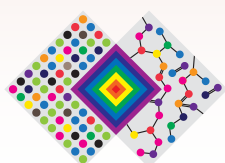
- Ensure the surface is free from rust, grease, oil and loose matter, sand the surface with emery paper 180 and wipe clean.

METHOD OF APPLICATION

- After proper surface preparation, apply a first coat of Pink primer on the surface of application.
- Allow drying for 6 – 8 hours. Smoothen the surface by filling dents with thin coat of putty and allow it to dry for 6 – 8 hours.
- Sand the surface with emery paper 180 and wipe clean.
- Apply another coat of primer and allow drying for 6–8 hours. Sand the surface with Emery paper 320 and wipe clean.

Area of Application	Protect all your favorite wood furniture with Shalimar Pink Primer for wood
Finish	Smooth & Matt
Coverage	130 – 150 Sq. ft per litre per coat (On smooth surface by brush application)
Flash Point	34°C (by Abel closed)
Supply Viscosity	90 + / - 20 seconds (by FC4 at 30°C)
Surface Dry	Within 1 hour (At 30 + / - 1°C & 65 + / - 5% R.H)
Recoat Time	12 hours minimum
Thinner	Turpsol / GP Thinner
Pack Available	500 ml / 1 litre / 4 litre / 20 litre
Shades Available	Pink

Actual technical details may vary from the quote above due to factors such as method & condition of application, type of surface & surface preparation.



THE ART & SCIENCE OF PAINTS

Shalimar Paints Ltd.

Corp. Office: 4th Floor, Plot No. 64, Sector-44, Gurgaon -122001, Haryana (India)

P: +91-124-4616600 | **F:** +91-124-4616659

E: askus@shalimarpaints.com | www.shalimarpaints.com

